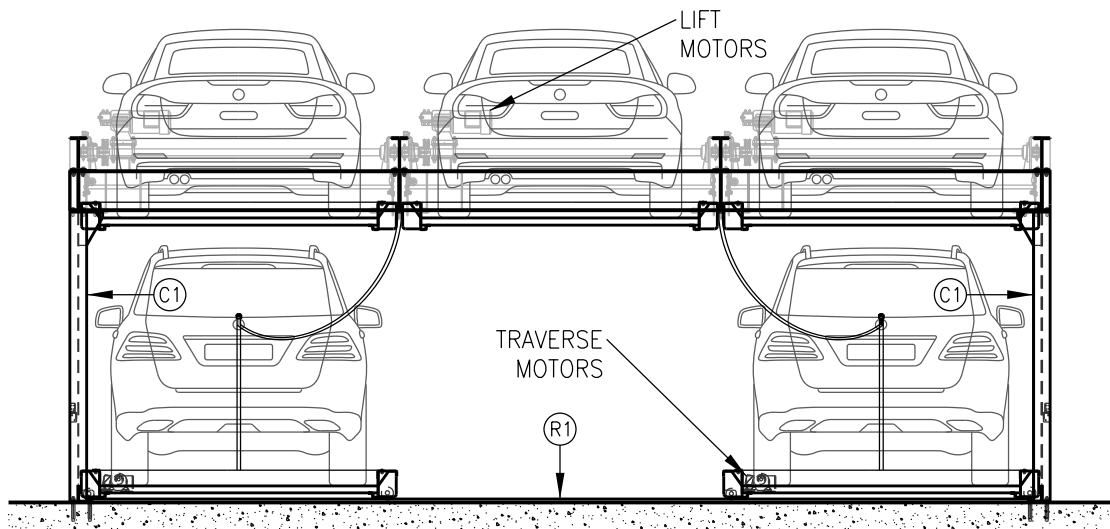
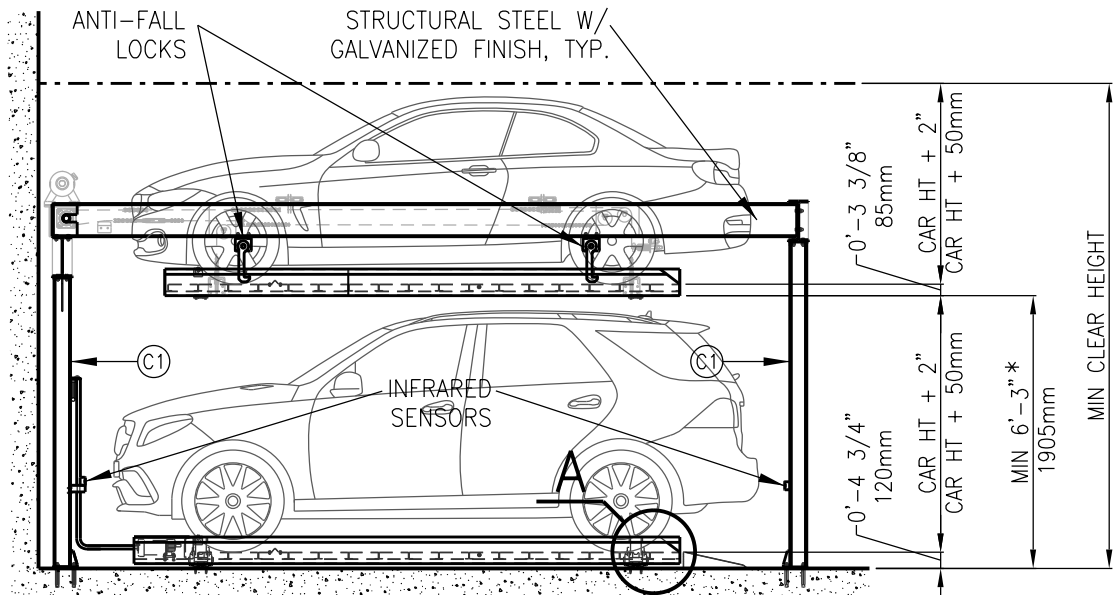


PLAN



SECTION 1



*MIN 7'-0" IN CITY OF LA

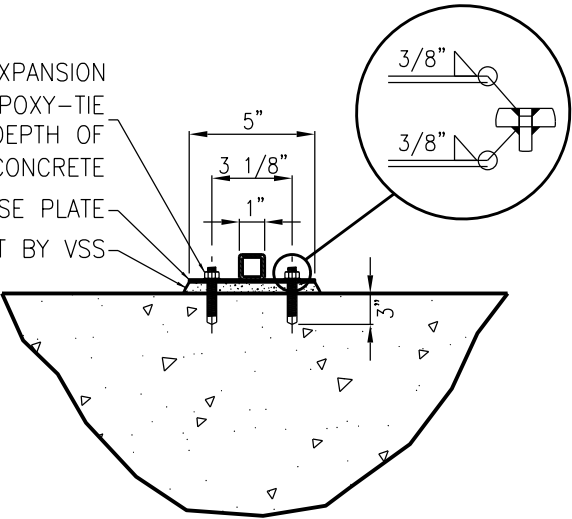
TECHNICAL SPECIFICATIONS			
SYSTEM TYPE*		LIFT & SLIDE	
MODEL NO.		DSP2L	
STD CAR DIMS**	LENGTH	204.7 in	(5,200 mm)
	WIDTH***	86.6 in	(2,200 mm)
	HEIGHT	63 in (L)	(1,600 mm (L))
		74.8 in (S)	(1,900 mm (S))
	WEIGHT	5,291 lbs	(2,400 Kg)
POWER REQUIREMENTS		AC220V / 3 PH / 40 amp	
TRAVERSE MOTOR		0.2 Kw	
LIFT MOTOR		3.7 Kw	
NOISE LEVEL		<62 dB	
MAX QUEUE TIME		40 sec	

L = SEDAN / S = SUV
* SYSTEM IS AVAILABLE IN MODULES OF 2 AND 3
** INDUSTRY STD DIMS. ACCOMMODATES 81% OF CARS IN PRODUCTION
*** DIM WITH SIDE MIRRORS FOLDED

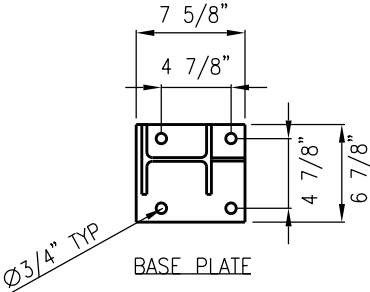
2				PROJECT						
1				PART NAME		DSP2L				
REV	DETAIL OF REVISION	DATE	DESIGNED	APPROVED	PROJECTION	SCALE	DATE	DESIGNED	CHECKED	APPROVED
								SR	MW	
THIS CONFIDENTIAL DOCUMENT IS THE PROPERTY OF PARKMATIC AND SHALL NOT BE GIVEN, COPIED OR REPRODUCED WITHOUT PRIOR WRITTEN CONSENT.					NEW YORK OFFICE, USA					
					1129 Northern Blvd Suite #400 Manhasset, NY 11030					
					E: info@parkmatic.com P: +1-800-422-5438 W: parkmatic.com					
					DWG. NO				REVISION	
							PARKMATIC AUTOMATED & MECHANICAL PARKING SYSTEMS			

1/2" Ø HILTI KWIK BOLT 3 EXPANSION
ANCHORS INSTALLED W/ EPOXY-TIE
ADHESIVE TO AN EMBEDMENT DEPTH OF
3" IN CONCRETE

BASE PLATE
GROUT BY VSS

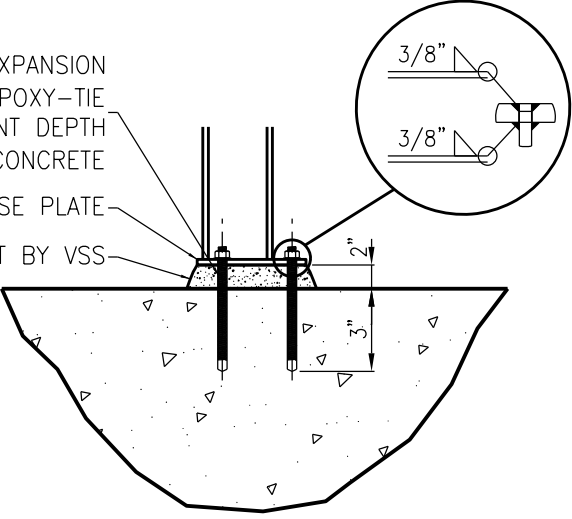


RAIL R1

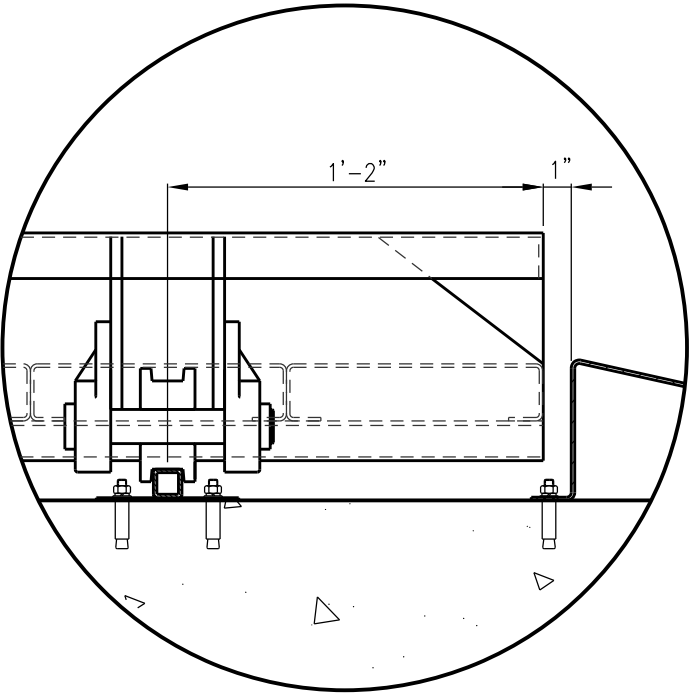


3/4" Ø HILTI KWIK BOLT 3 EXPANSION
ANCHORS INSTALLED W/ EPOXY-TIE
ADHESIVE TO AN EMBEDMENT DEPTH
OF 3" IN CONCRETE

BASE PLATE
GROUT BY VSS

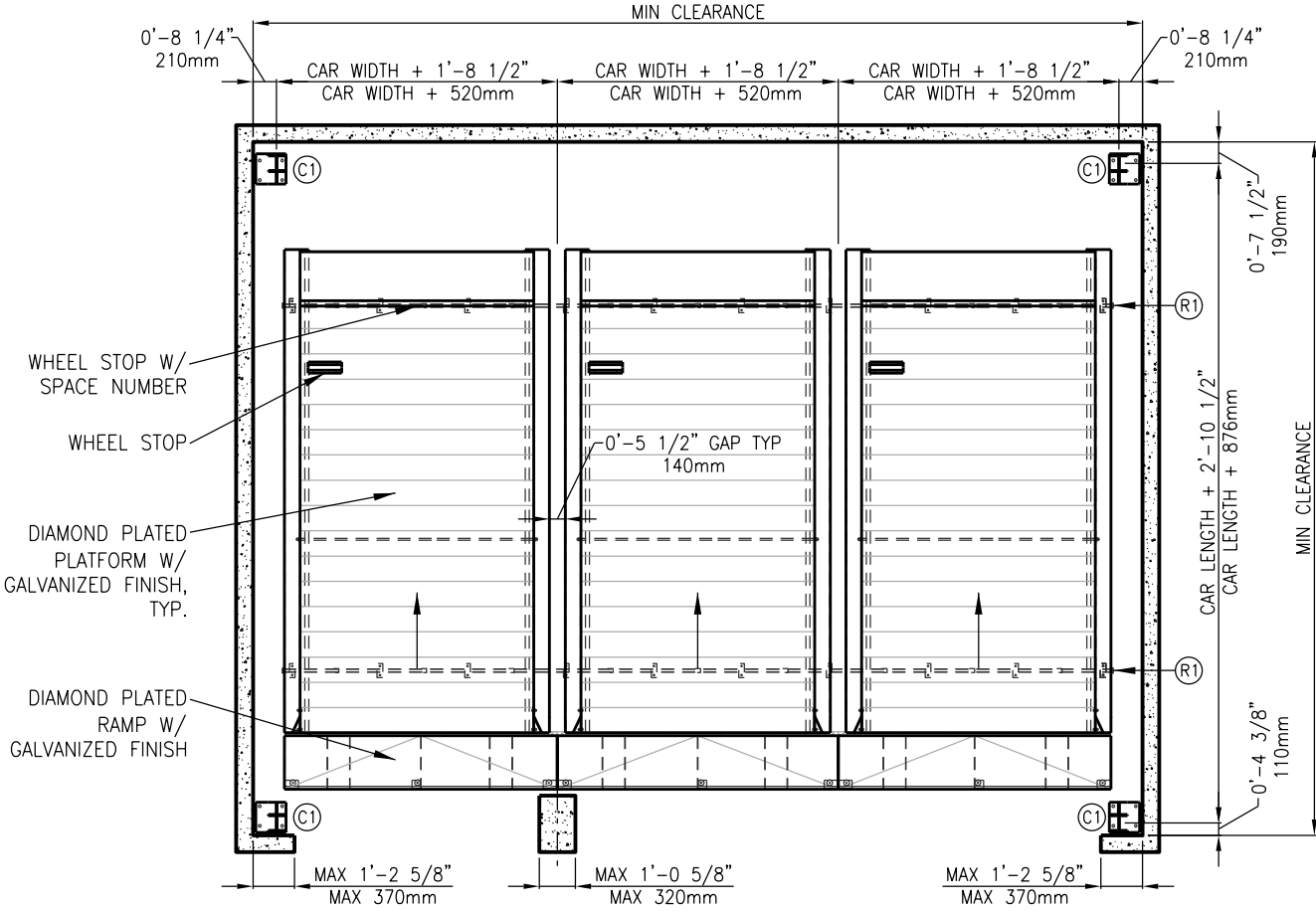


COLUMN C1

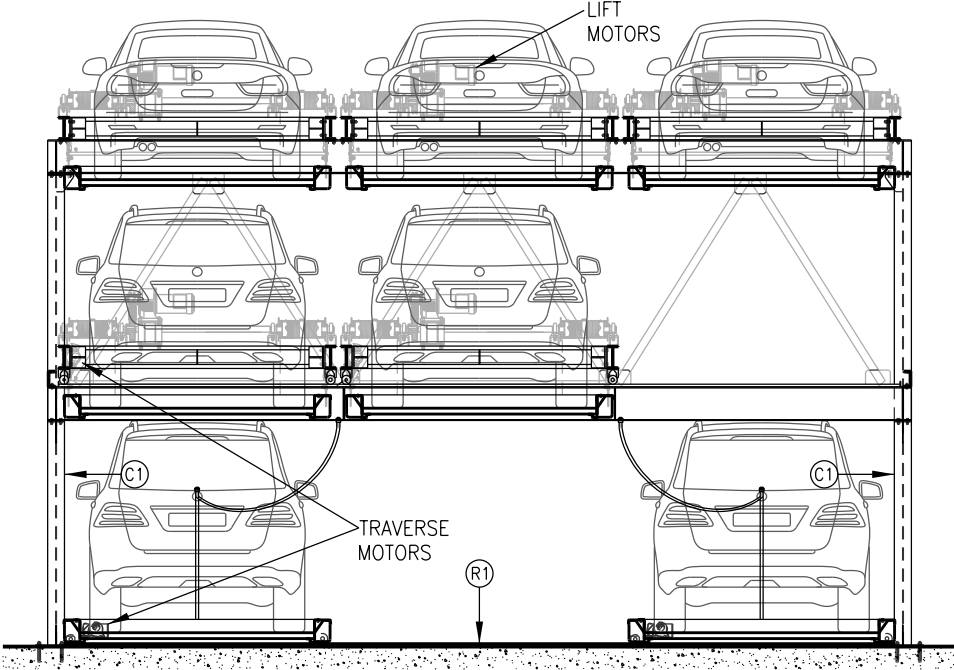


DETAIL A

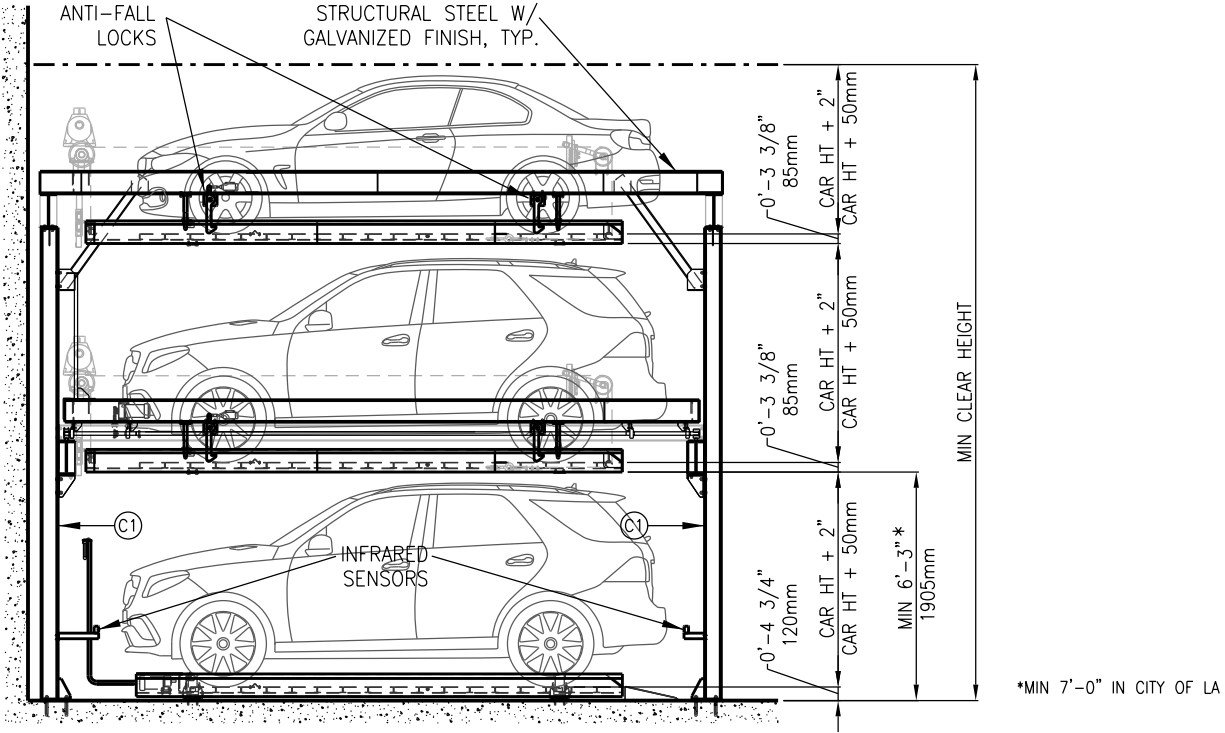
<div>2</div>					PROJECT							
<div>1</div>					PART NAME		DSP2L					
REV	DETAIL OF REVISION		DATE	DESIGNED	APPROVED	PROJECTION	SCALE	DATE	DESIGNED	CHECKED	APPROVED	
THIS CONFIDENTIAL DOCUMENT IS THE PROPERTY OF PARKMATIC AND SHALL NOT BE GIVEN, COPIED OR REPRODUCED WITHOUT PRIOR WRITTEN CONSENT.			NEW YORK OFFICE, USA			<div><div></div><div></div></div>			SR	MW		
			1129 Northern Blvd Suite #400 Manhasset, NY 11030 E: info@parkmatic.com P: +1-800-422-5438 W: parkmatic.com			DWG. NO					REVISION	<div></div>
						<div><div>Parkmatic</div></div>		PARKMATIC AUTOMATED & MECHANICAL PARKING SYSTEMS				



PLAN



SECTION 1



SECTION 2

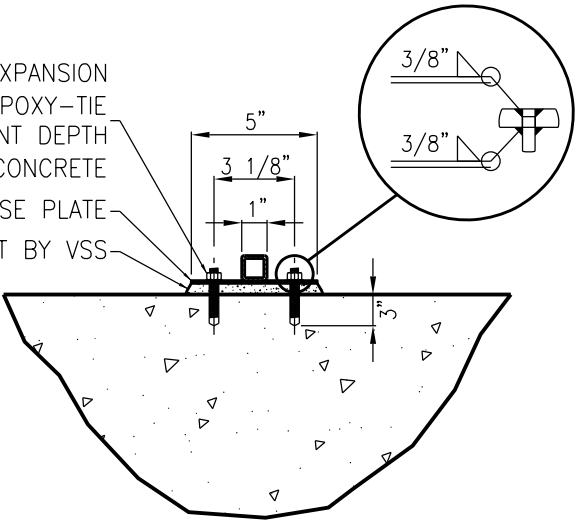
TECHNICAL SPECIFICATIONS			
SYSTEM TYPE*		LIFT & SLIDE	
MODEL NO.		DSP3L	
STD CAR DIMS**	LENGTH	204.7 in	(5,200 mm)
	WIDTH***	86.6 in	(2,200 mm)
	HEIGHT	63 in (L)	(1,600 mm (L))
		74.8 in (S)	(1,900 mm (S))
	WEIGHT	5,291 lbs	(2,400 Kg)
POWER REQUIREMENTS		AC220V / 3 PH / 40 amp	
TRAVERSE MOTOR		0.2 Kw	
LIFT MOTOR		3.7 Kw	
NOISE LEVEL		<62 dB	
MAX QUEUE TIME		60 sec	

L = SEDAN / S = SUV
* SYSTEM IS AVAILABLE IN MODULES OF 2 AND 3
** INDUSTRY STD DIMS. ACCOMMODATES 81% OF CARS IN PRODUCTION
*** DIM WITH SIDE MIRRORS FOLDED

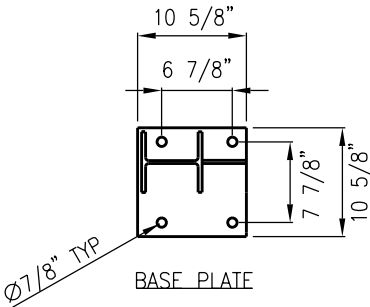
<div>2</div>					PROJECT						
<div>1</div>					PART NAME		DSP3L				
REV	DETAIL OF REVISION	DATE	DESIGNED	APPROVED	PROJECTION	SCALE	DATE	DESIGNED	CHECKED	APPROVED	
THIS CONFIDENTIAL DOCUMENT IS THE PROPERTY OF PARKMATIC AND SHALL NOT BE GIVEN, COPIED OR REPRODUCED WITHOUT PRIOR WRITTEN CONSENT.		NEW YORK OFFICE, USA			<div><div></div><div></div></div>			SR	MW		
		1129 Northern Blvd Suite #400 Manhasset, NY 11030			DWG. NO				REVISION	<div></div>	
		E: info@parkmatic.com P: +1-800-422-5438 W: parkmatic.com			<div><div><div>P</div><div>arkmatic</div></div><div>PARKMATIC AUTOMATED & MECHANICAL PARKING SYSTEMS</div></div>						

1/2" Ø HILTI KWIK BOLT 3 EXPANSION
ANCHORS INSTALLED W/ EPOXY-TIE
ADHESIVE TO AN EMBEDMENT DEPTH
OF 3" IN CONCRETE

BASE PLATE
GROUT BY VSS

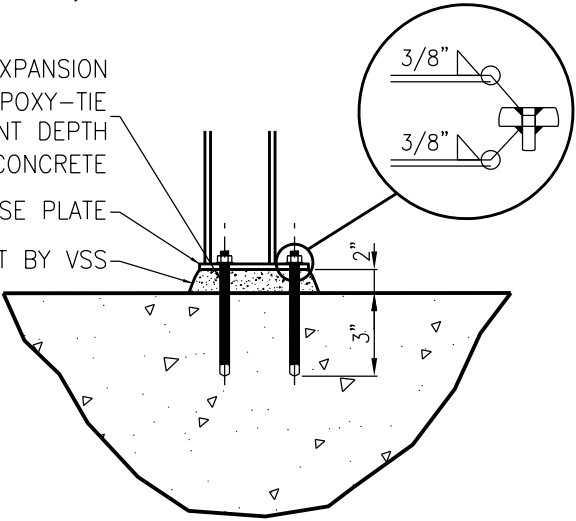


RAIL R1

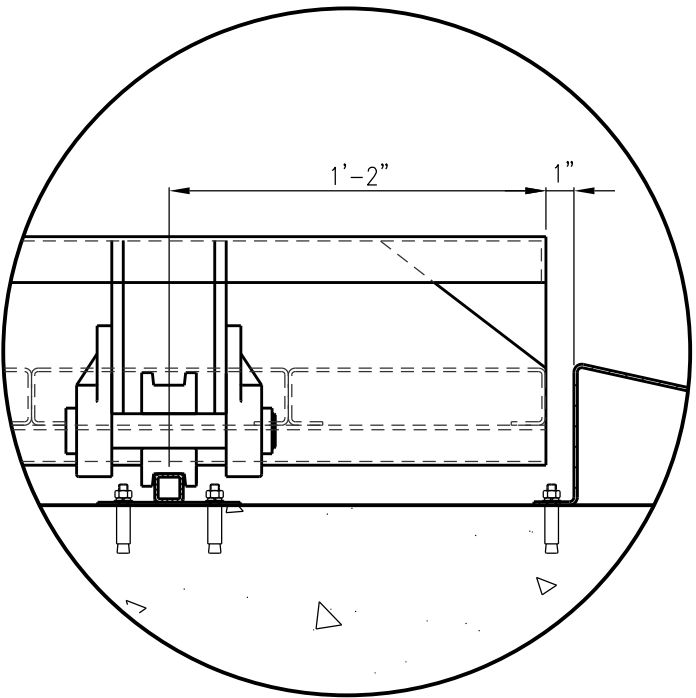


7/8" Ø HILTI KWIK BOLT 3 EXPANSION
ANCHORS INSTALLED W/ EPOXY-TIE
ADHESIVE TO AN EMBEDMENT DEPTH
OF 3" IN CONCRETE

BASE PLATE
GROUT BY VSS

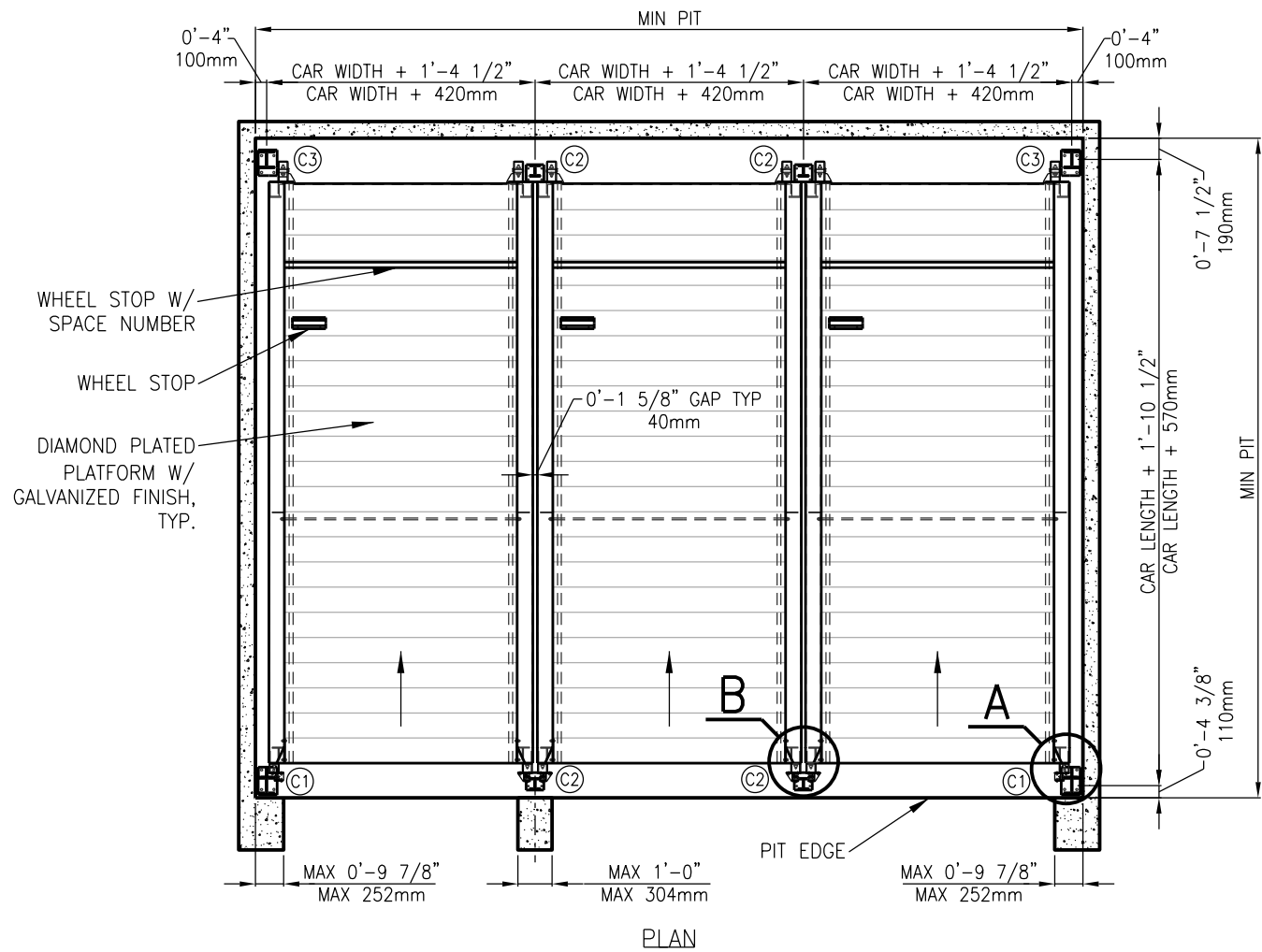


COLUMN C1

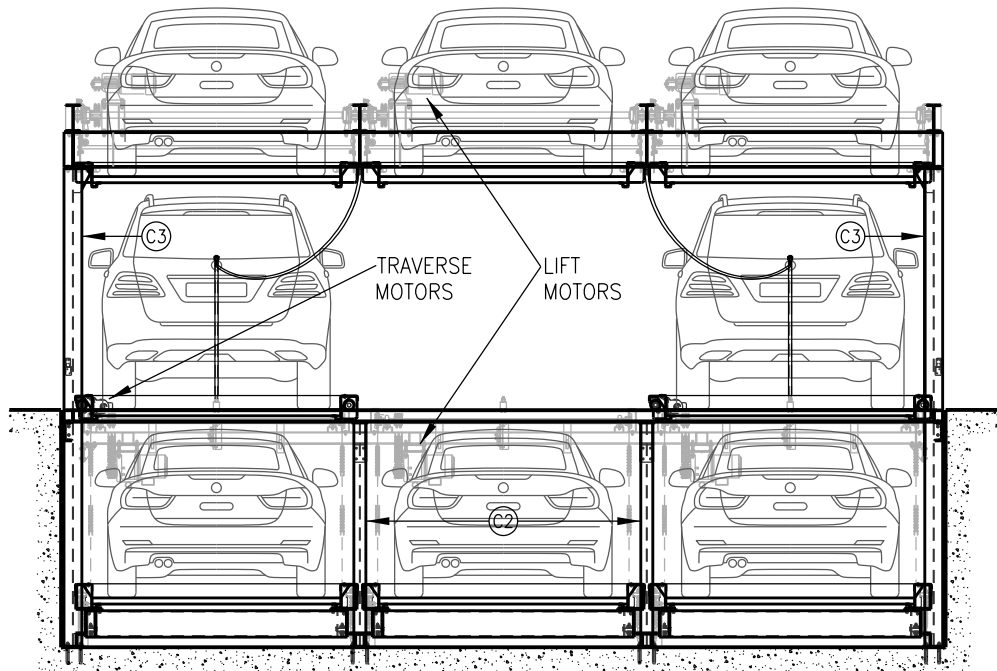


DETAIL A

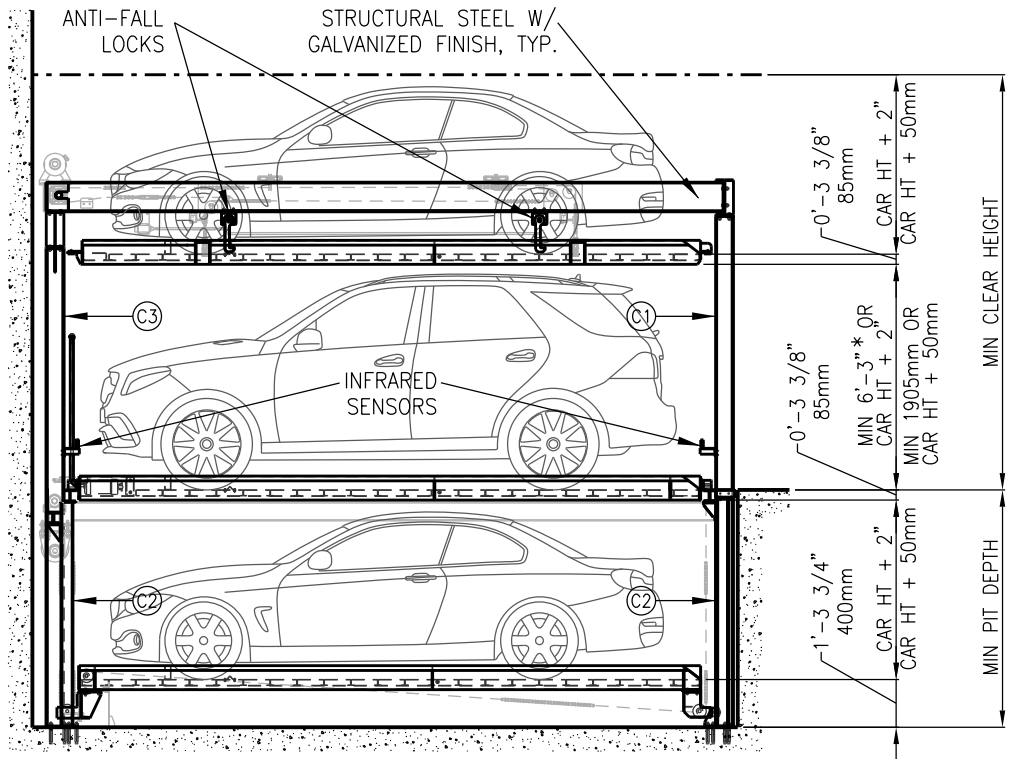
<div>2</div>					PROJECT						
<div>1</div>					PART NAME		DSP3L				
REV	DETAIL OF REVISION	DATE	DESIGNED	APPROVED	PROJECTION	SCALE	DATE	DESIGNED	CHECKED	APPROVED	
<div>THIS CONFIDENTIAL DOCUMENT IS THE PROPERTY OF PARKMATIC AND SHALL NOT BE GIVEN, COPIED OR REPRODUCED WITHOUT PRIOR WRITTEN CONSENT.</div>					<div>↗</div>	<div>⊕</div>			SR	MW	
					DWG. NO					REVISION	<div>△</div>
					<div><div><div>P</div><div>parkmatic</div></div><div>PARKMATIC AUTOMATED & MECHANICAL PARKING SYSTEMS</div></div>						
		NEW YORK OFFICE , USA									
		1129 Northern Blvd Suite #400 Manhasset, NY 11030									
		E: info@parkmatic.com P: +1-800-422-5438 W: parkmatic.com									



PLAN



SECTION 1

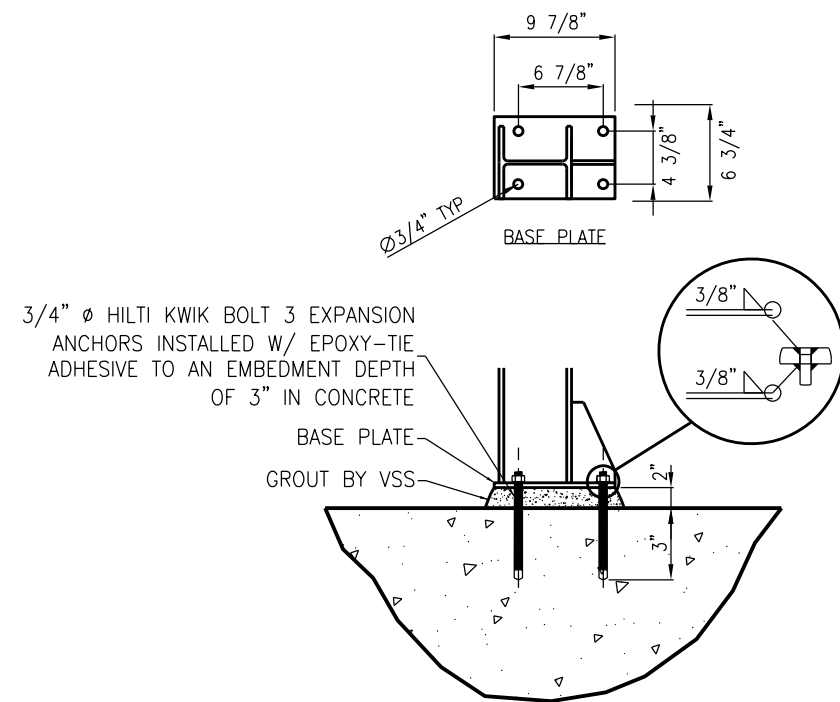


SECTION 2

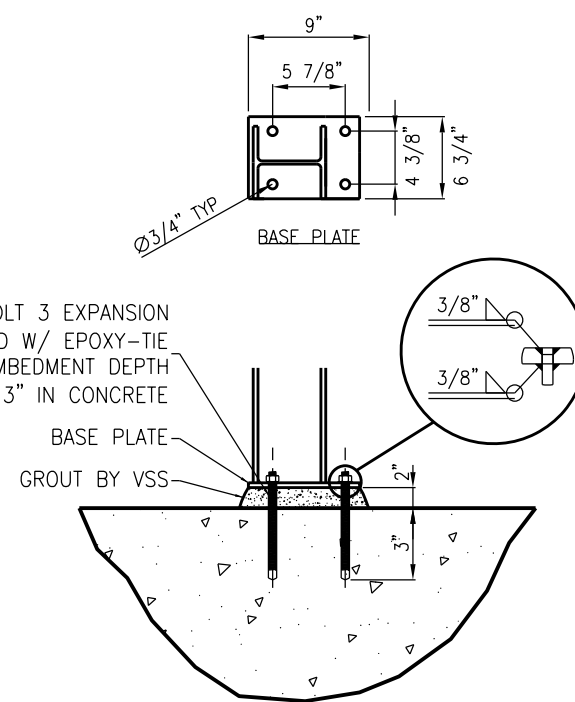
TECHNICAL SPECIFICATIONS			
SYSTEM TYPE*		LIFT & SLIDE	
MODEL NO.		DSP3LP	
STD CAR DIMS**	LENGTH	204.7 in	(5,200 mm)
	WIDTH***	86.6 in	(2,200 mm)
	HEIGHT	63 in (L)	(1,600 mm (L))
		74.8 in (S)	(1,900 mm (S))
	WEIGHT	5,291 lbs	(2,400 Kg)
POWER REQUIREMENTS		AC220V / 3 PH / 40 amp	
TRAVERSE MOTOR		0.2 Kw	
LIFT MOTOR		3.7 Kw	
NOISE LEVEL		<62 dB	
MAX QUEUE TIME		40 sec	

L = SEDAN / S = SUV
* SYSTEM IS AVAILABLE IN MODULES OF 2 AND 3
** INDUSTRY STD DIMS. ACCOMMODATES 81% OF CARS IN PRODUCTION
*** DIM WITH SIDE MIRRORS FOLDED

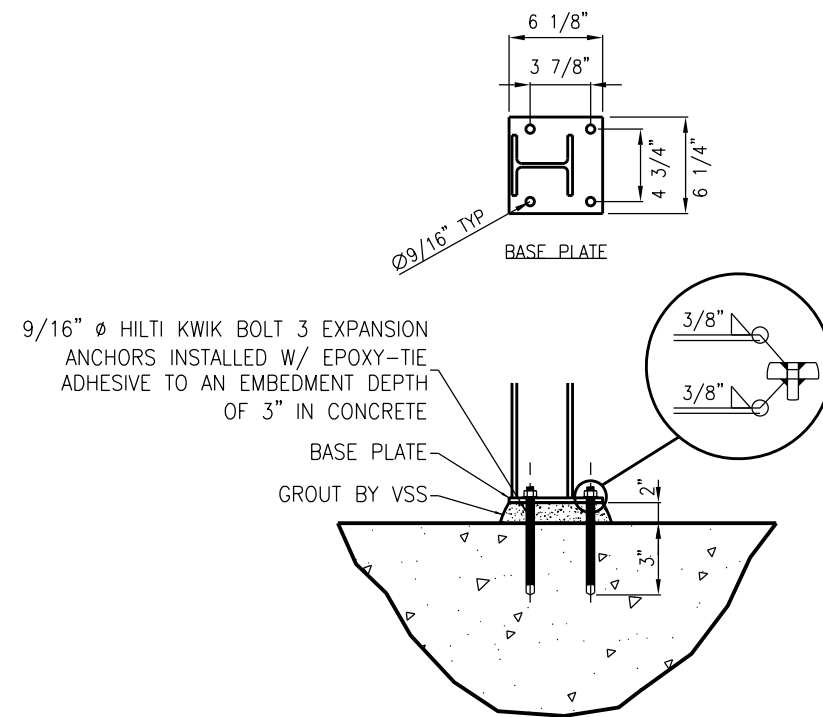
<div>2</div>					PROJECT						
<div>1</div>					PART NAME		DSP3LP				
REV	DETAIL OF REVISION	DATE	DESIGNED	APPROVED	PROJECTION	SCALE	DATE	DESIGNED	CHECKED	APPROVED	
	THIS CONFIDENTIAL DOCUMENT IS THE PROPERTY OF PARKMATIC AND SHALL NOT BE GIVEN, COPIED OR REPRODUCED WITHOUT PRIOR WRITTEN CONSENT.	NEW YORK OFFICE, USA			<div><div></div><div></div></div>			SR	MW		
		1129 Northern Blvd Suite #400 Manhasset, NY 11030 E: info@parkmatic.com P: +1-800-422-5438 W: parkmatic.com			DWG. NO				REVISION	<div></div>	
					<div><div><div>P</div><div>arkmatic</div></div><div>PARKMATIC AUTOMATED & MECHANICAL PARKING SYSTEMS</div></div>						



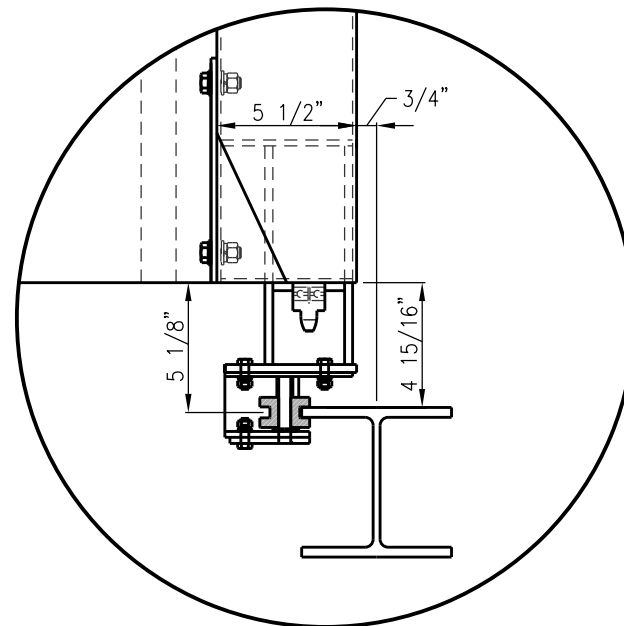
COLUMN C1



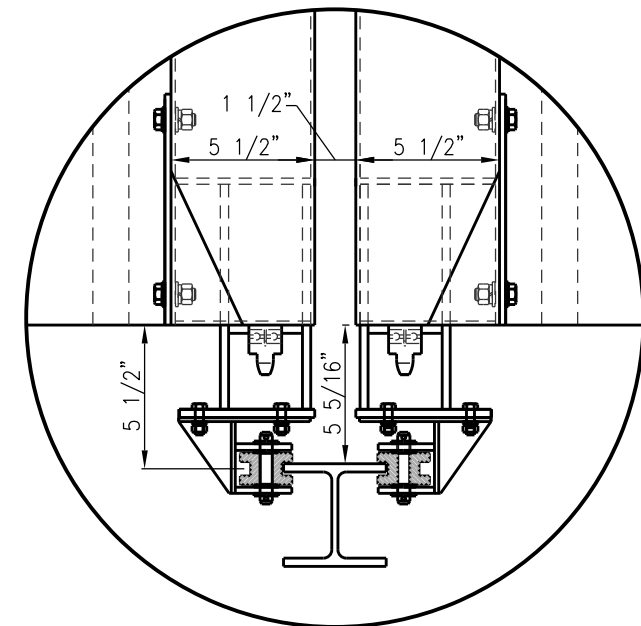
COLUMN C3




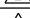




COLUMN C2

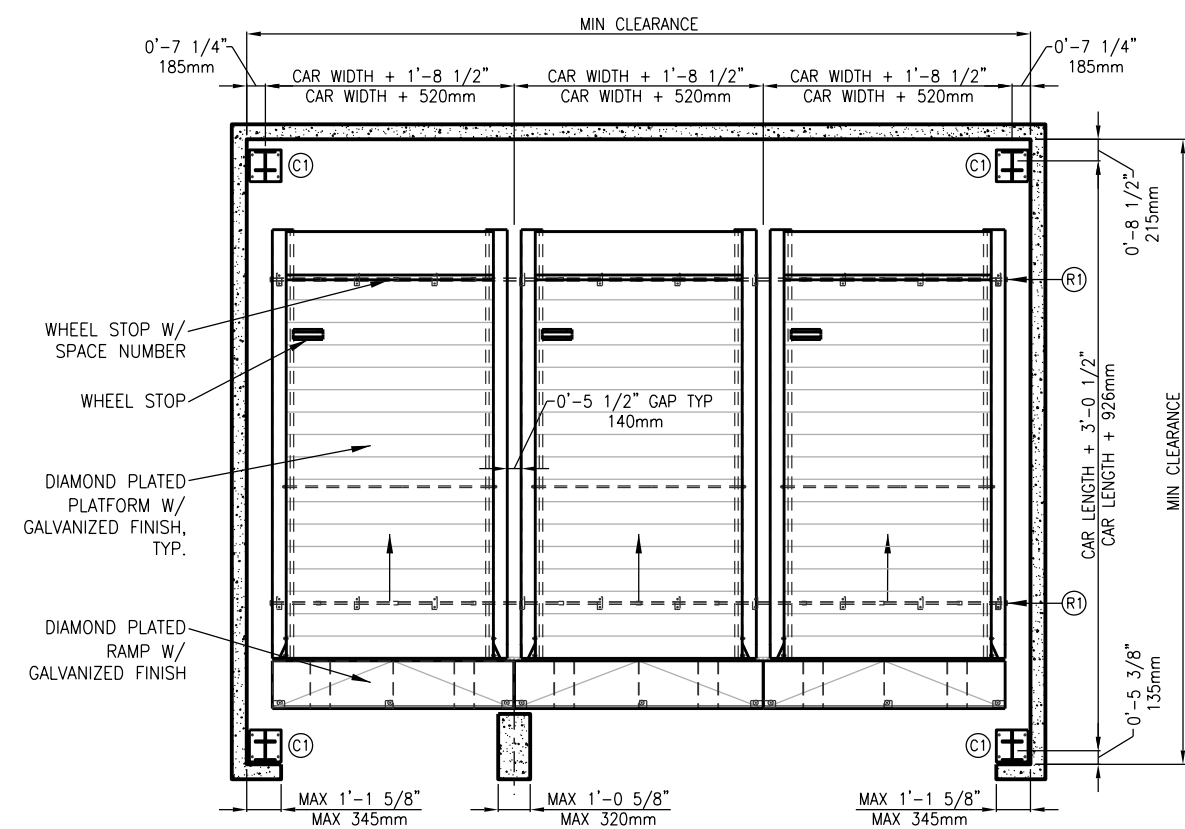


DETAIL A

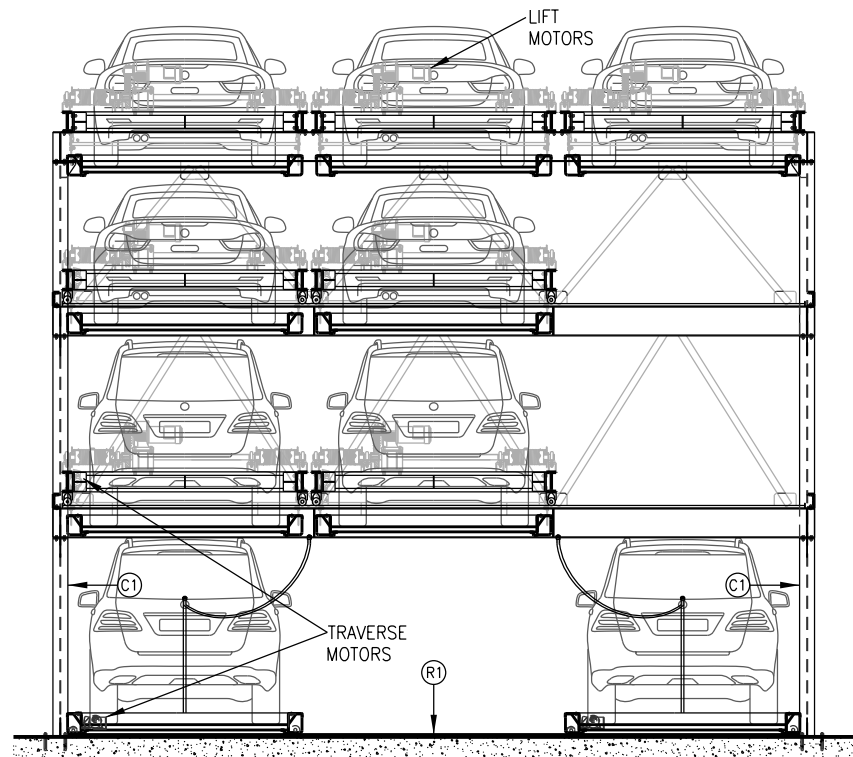


DETAIL B

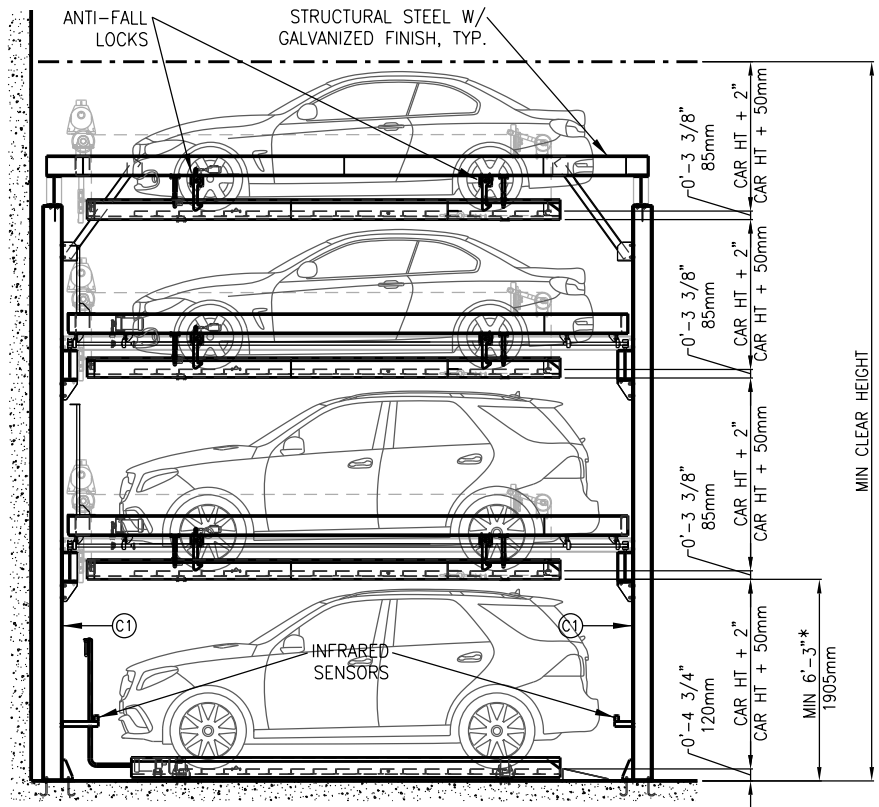
					PROJECT					
					PART NAME	DSP3LP				
REV	DETAIL OF REVISION	DATE	DESIGNED	APPROVED	PROJECTION	SCALE	DATE	DESIGNED	CHECKED	APPROVED
THIS CONFIDENTIAL DOCUMENT IS THE PROPERTY OF PARKMATIC AND SHALL NOT BE GIVEN, COPIED OR REPRODUCED WITHOUT PRIOR WRITTEN CONSENT.								SR	MW	
					DWG. NO				REVISION	
					<div>PARKMATIC AUTOMATED & MECHANICAL PARKING SYSTEMS</div>					



PLAN






SECTION 1

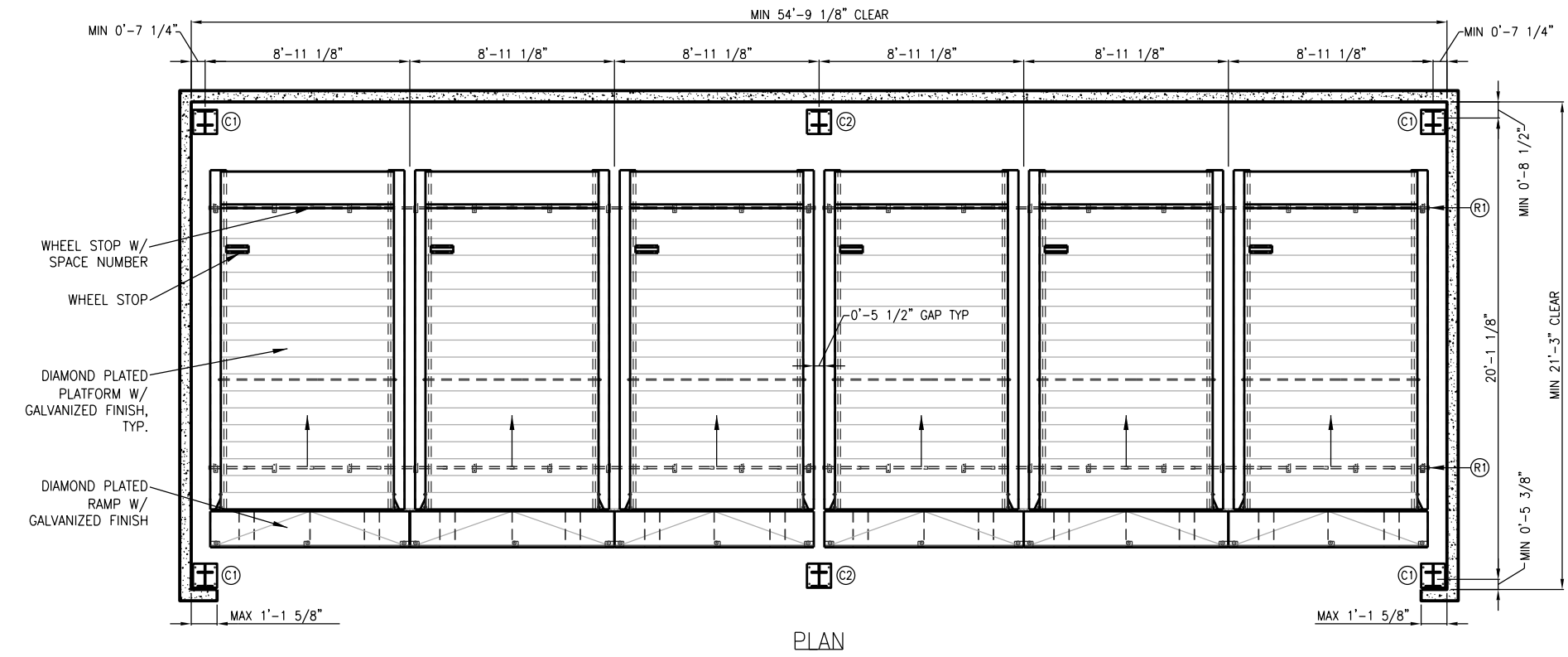


SECTION 2

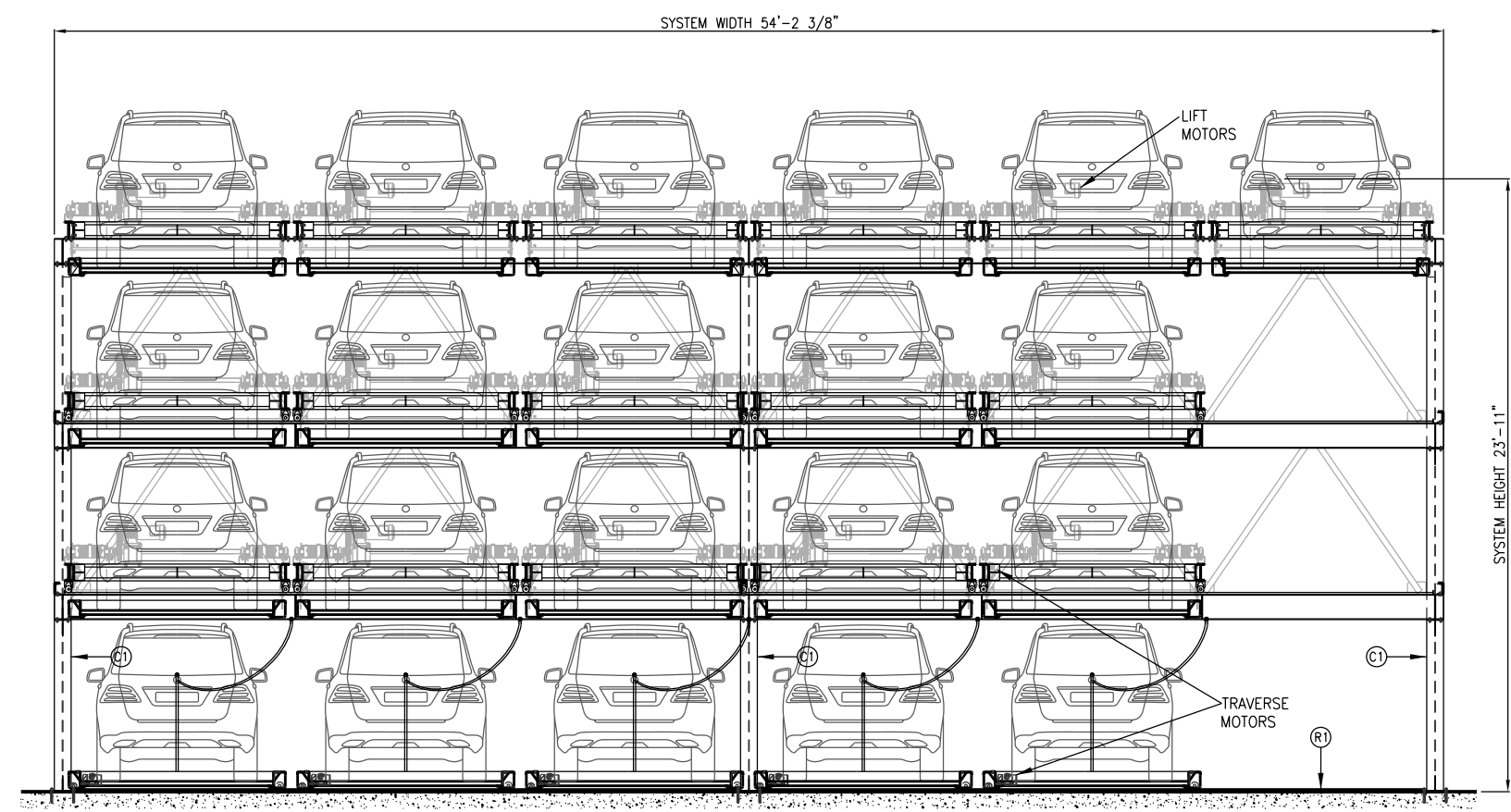
TECHNICAL SPECIFICATIONS			
SYSTEM TYPE*		LIFT & SLIDE	
MODEL NO.		DSP4L	
STD CAR DIMS**	LENGTH	204.7 in	(5,200 mm)
	WIDTH***	86.6 in	(2,200 mm)
	HEIGHT	63 in (L)	(1,600 mm (L))
		74.8 in (S)	(1,900 mm (S))
		WEIGHT	5,291 lbs (2,400 Kg)
POWER REQUIREMENTS		AC220V / 3 PH / 40 amp	
TRAVERSE MOTOR		0.2 Kw	
LIFT MOTOR		3.7 Kw	
NOISE LEVEL		<62 dB	
MAX QUEUE TIME		85 sec	

L = SEDAN / S = SUV
* SYSTEM IS AVAILABLE IN MODULES OF 2 AND 3
** INDUSTRY STD DIMS. ACCOMMODATES 81% OF CARS IN PRODUCTION
*** DIM WITH SIDE MIRRORS FOLDED

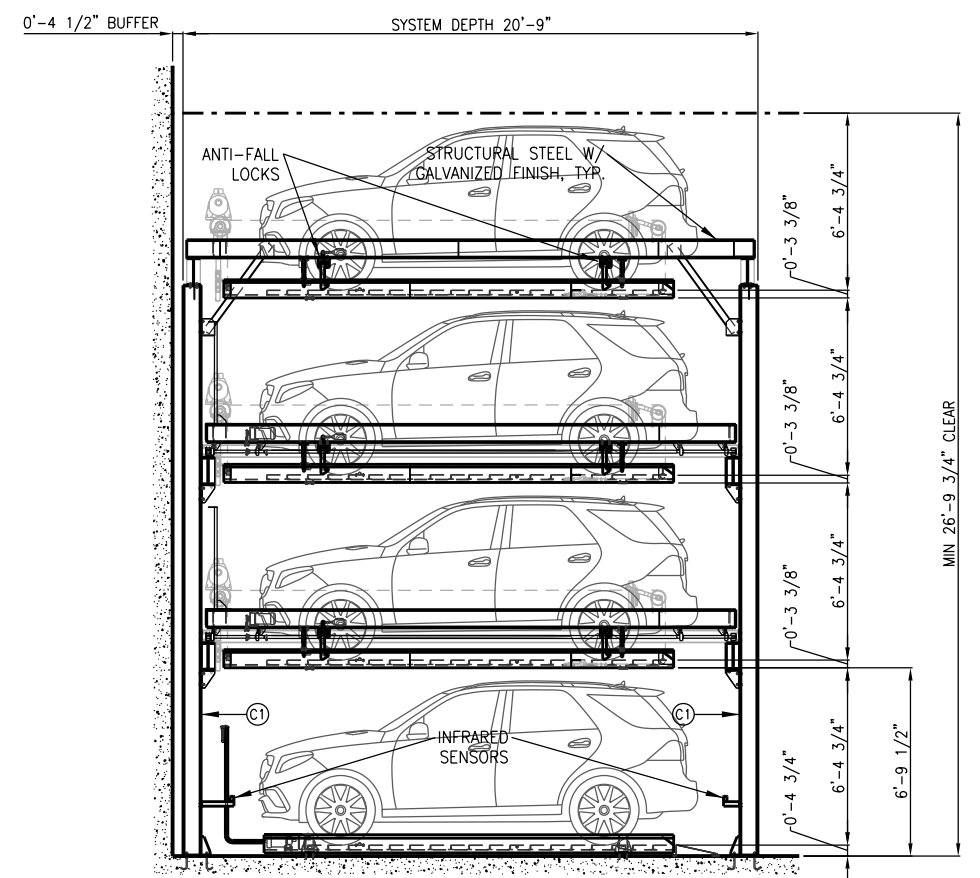
<div>2</div>						PROJECT					
<div>1</div>						PART NAME		DSP4L			
REV	DETAIL OF REVISION	DATE	DESIGNED	APPROVED	PROJECTION	SCALE	DATE	DESIGNED	CHECKED	APPROVED	
THIS CONFIDENTIAL DOCUMENT IS THE PROPERTY OF PARKMATIC AND SHALL NOT BE GIVEN, COPIED OR REPRODUCED WITHOUT PRIOR WRITTEN CONSENT.		<u>NEW YORK OFFICE, USA</u>						SR	MW		
					DWG. NO				REVISION		
		1129 Northern Blvd Suite #400 Manhasset, NY 11030 E: info@parkmatic.com P: +1-800-422-5438 W: parkmatic.com					PARKMATIC AUTOMATED & MECHANICAL PARKING SYSTEMS				



PLAN



SECTION 1








SECTION 2

TECHNICAL SPECIFICATIONS		
SYSTEM TYPE		LIFT & SLIDE
MODEL NO.		DSP4L-6
STD CAR DIMS*	LENGTH	204.7 in
	WIDTH**	86.6 in
	HEIGHT	74.8 in
	WEIGHT	5,500 lbs
POWER REQUIREMENTS		AC220V / 3 PH / 40 amp
TRAVERSE MOTOR		0.2 Kw
LIFT MOTOR		3.7 Kw
NOISE LEVEL		<62 dB
MAX QUEUE TIME		85 sec

* INDUSTRY STD DIMS. ACCOMMODATES 81% OF CARS IN PRODUCTION
** DIM WITH SIDE MIRRORS FOLDED

VERTICAL LOAD TABLE			
COLUMN/RAIL	C1	C2	R1
STATIC LOAD	79.0 kN	158.0 kN	12.4 kN
DYNAMIC LOAD	94.8 kN	189.6 kN	14.9 kN

					PROJECT	4510 N FL AVE				
					PART NAME	DSP4L-6 (ALL SUV)				
REV	DETAIL OF REVISION	DATE	DESIGNED	APPROVED	PROJECTION	SCALE	DATE	DESIGNED	CHECKED	APPROVED
THIS CONFIDENTIAL DOCUMENT IS THE PROPERTY OF PARKMATIC AND SHALL NOT BE GIVEN, COPIED OR REPRODUCED WITHOUT PRIOR WRITTEN CONSENT.		NEW YORK OFFICE, USA	1129 Northern Blvd Suite #400 Manhasset, NY 11030 E: info@parkmatic.com P: +1-800-422-5438 W: parkmatic.com				04/18/2020	SR	MW	
					DWG. NO			REVISION		
					 PARKMATIC AUTOMATED & MECHANICAL PARKING SYSTEMS					